

ATLANTICA di NAVIGAZIONE S.P.A. NAPLES – ITALY

CONTRACT : 915436/00615979/0116676
SANPAOLO LEASINT S.P.A

**TRANSTEC
40FT. – 120 TON GENERAL CARGO ROLLTRAILER (2.5 M)**

**OPERATING
*
MAINTENANCE
*
SPARE PARTS
*
MANUAL**

TRANSTEC SYSTEMS LIMITED
UPPER CHOBHAM ROAD
CAMBERLEY GU15 1HB
UNITED KINGDOM

TEL: + 44 (0) 1276.683565
FAX: + 44 (0) 1276. 26875

Technical Data

TSC 30051

CONTRACT : 915436/00615979/0116676

Sanpaolo Leasing S.P.A.

OPERATOR : ATLANTICA di NAVIGAZIONE S.P.A of NAPLES - ITALY

FLEET SERIAL NOS :

TRANSTEC 40 ft. - 120 ton General Cargo Rolltrailer (2.5M)

GREM 120062 8

GREM 120063 3

GREM 120064 9

GREM 120065 4

GREM 120066 0

Technical Data

TRANSTEC 40 ft. - 120 ton General Cargo Rolltrailer (2.5M)

Max. Payload	120.000 kgs
Platform Size L x W	12,315 x 2.640 mm.
Platform Height	870 mm / 920 mm (front / over running gear)
Decking	60 mm. pine wood impregnated
Solid Rubber Tyre Size	28" x 16" /22" (711 x 406/559 mm) steel banded

Accessories	4 x Container Locating Spigots (retractable)
	4 x " D" Shackles
	Unladen Forklift Pockets (2050 mm centres)
	Safety Hooks (at the coupling tunnel)
	22 x Lashings Bars (2 + 9 + 9 + 2)
	12 x Stanchion Pockets (2 + 4 + 4 + 2)
	Steel "Stacking" Plates over running gear

Load Distribution

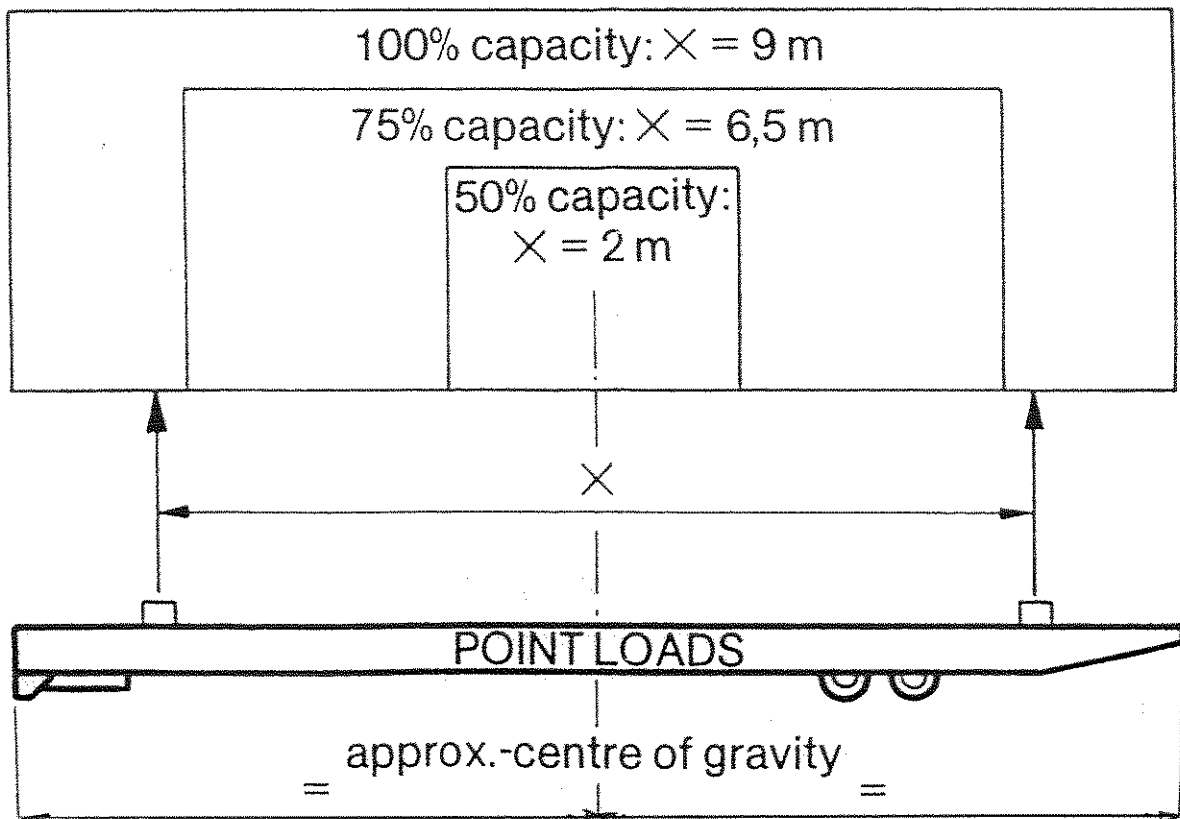
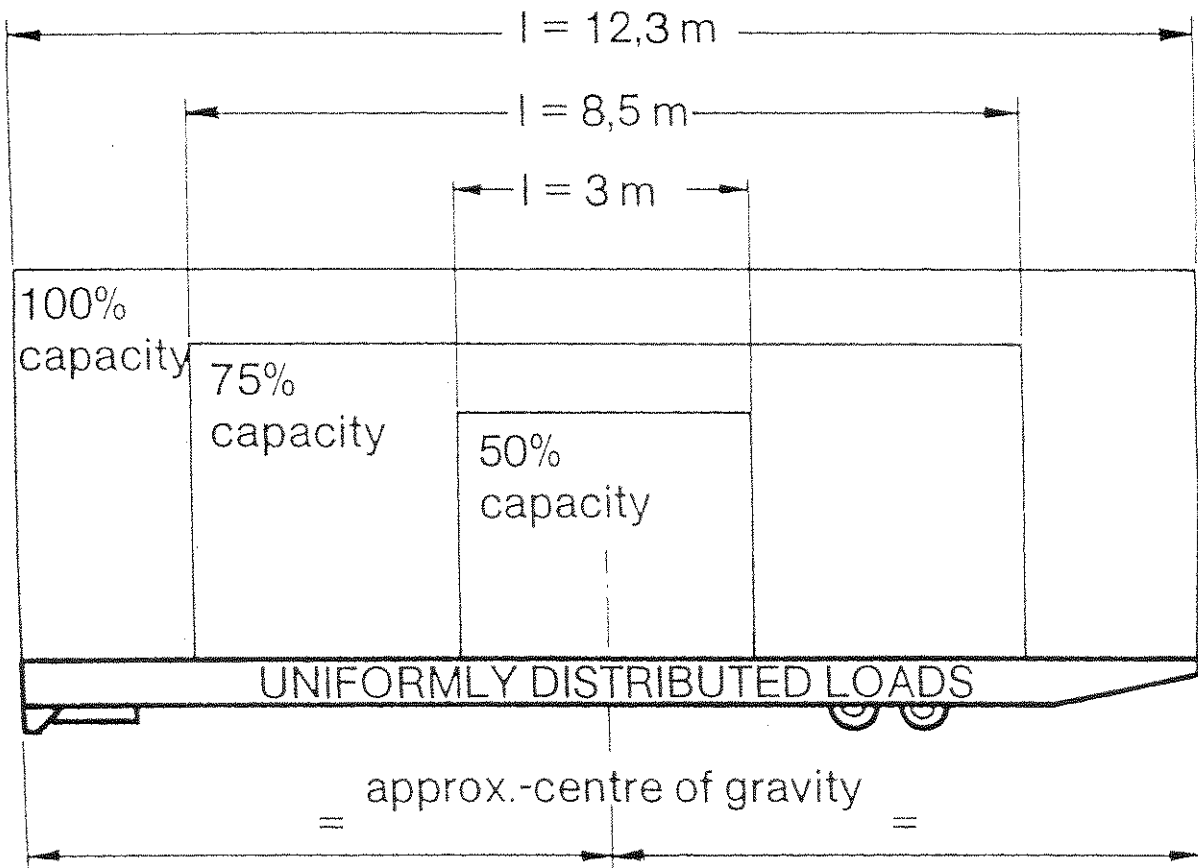
King Pin Load	max. 30 tons
1 st Axle Line	max. 25 tons x 2
2 nd Axle Line	max. 25 tons x 2
Tare Weight	approx. 10.000 kgs.

CONTRACT : 915436/00615979/0116676

Sanpaolo Leasint S.P.A.

OPERATOR : ATLANTICA di NAVIGAZIONE S.P.A of NAPLES – ITALY

LOAD DIAGRAM



SERVICE MANUAL

TRANSTEC 40 ft.- 120 ton General Cargo Rolltrailer

GENERAL :

The following general checks and maintenance procedures should be carried out on a regular basis to ensure safe and trouble free operations.

TYRES + WHEELS :

The steel banded solid rubber tyres are pressed onto the fully welded steel rims. A minimum monthly visual inspection for tyre damage is recommended.

LUBRICATION :

There are a total of 14 lubrication points in the running gear assembly

- One at the end of the each mild steel (C35) axle pivot pin (total 4)
- One at the end of each mild steel (C35) rocker pivot pin (total 2)
- One in each of the steel wheel rim. (total 8)

Regular lubrication of all 14 lube points at the end of the first month's operation thereafter, at least every 6 months. Make sure that all the plastic hubcaps are intact and firmly in position.

Use multi-purpose bearing grease (e.g. SKF GEM2 or LGEV2)

TORQUE MAINTENANCE SCHEDULE :

A. Inspection + Torque Schedule :

- Immediately within the first initial 24 hours operational service
- At the end of the first week of operation service
- Thereafter, at least every month as part of a standard monthly inspection routine

B. Wheel Set (castle nut M48) :

Should be checked every month to ensure that the torque is correct and that the retaining split pin is firmly in position.

If necessary, tighten up to a maximum torque of 900 Nm.

C. Keep Plate Bolts (M12 & M16)

The 4 rocker pin keep plate bolts and 8 axle keep plate bolts should be both visually and manually checked and if necessary torqued up to :

Max. 40 Nm M12 (8.8) axle keep plate bolts

Max. 100 Nm M18 (8.8) rocker keep plate bolts

Inspection and torque schedule as detailed under “ A “

SPARE PARTS SCHEDULE :

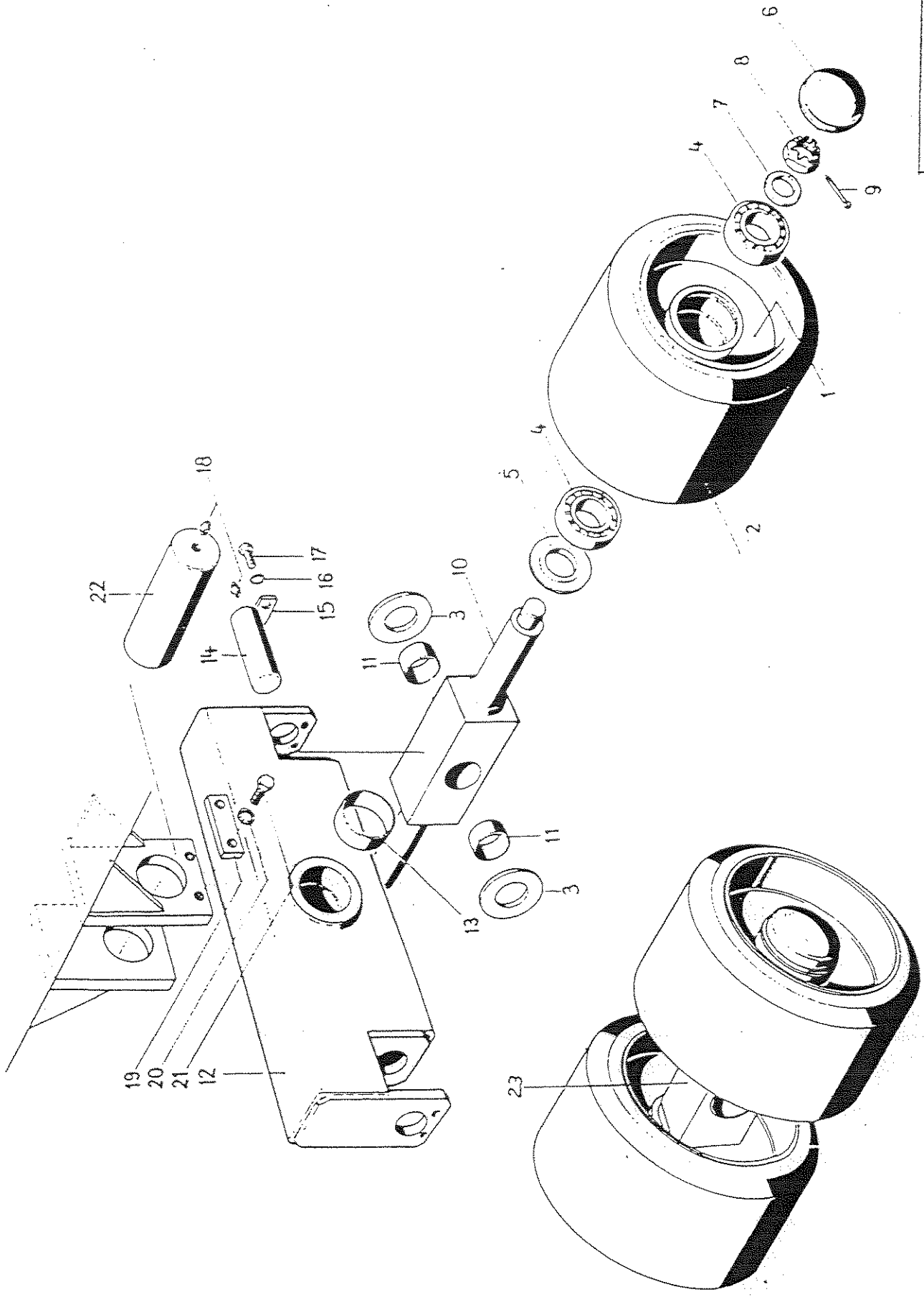
TSC 30051 – TSC 30052

RUNNING GEAR DRG NOS : 2.10.29.0016

RE : TRANSTEC 40 ft. – 120 ton Rolltrailer

ITEM DESCRIPTION

- 1 Steel Wheel Rim (basic)
- 2 Steel banded 28" x 16"/22" solid rubber tyre (559 x406/559 mm)
- 3 Steel Axle Spacer Washer (DIN 125)
- 4 Taper Roller Bearing
- 5 Oil Seal 90/40
- 6 Steel Hubcap
- 7 -
- 8 Lock Nut (M100)
- 9 Lock Ring
- 10 Pendle Axle (basic)
- 11 Axle Bush 90/95-40 (2)
- 12 Rocker Beam (basic) 1100 mm centres
- 13 Rocker Bush 120/140-60 (2)
- 14 Mild Steel Axle Pin 90mm dia.
- 15 Keep Plate (axle pin)
- 16 Lock washer (axle keep plate)
- 17 Treaded Bolt M12 (axle keep plate)
- 18 Grease Nipple
- 19 Keep Plate (rocker pin)
- 20 Lock Washer (rocker keep plate)
- 21 Threaded Bolt M16 (rocker keep plate)
- 22 Mild Steel Rocker Pin 120 mm dia.
- 23 Complete Pendle Wheel & Axle Assembly
With press-on 28" x 16" /22" steel banded
Solid Rubber single tyres (559x406/559 mm)



RUNNING GEAR

TransTec
 Cambridge, OH 43081-1488
 Tel: +1 (614) 373-6500 Fax: +1 (614) 373-2825

2.10.29.0016